

2022 Forestry Contributions Granville County, NC



Granville County has about 213,262 acres of privately owned timberland.



Landowners in this county received an estimated stumpage harvest value of \$6.2 million.



The forest sector in this county had a total economic contribution of approximately \$160 million in industry output to the county's economy.



The forest sector in this county supported 489 total jobs with a payroll of about \$33 million.

NC STATE

EXTENSION



Timberland⁸ & Reserved Forestland by Ownership⁹

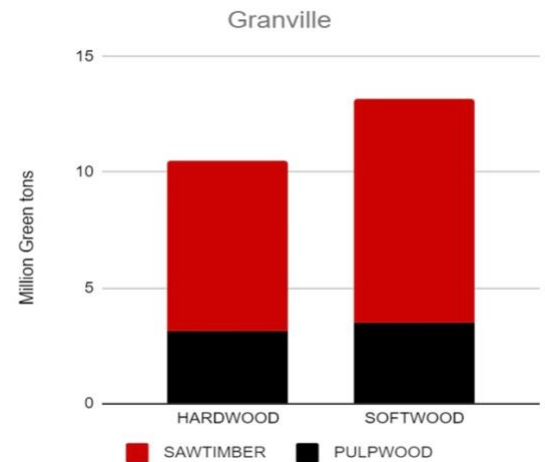
Ownership	NC (Acres)	Granville (Acres)
Public Timberland	2,601,709	17,000
Private Timberland	15,367,452	213,262
Reserve Forestland	648,263	-
Total Timberland and Forestland	18,617,424	230,262
All Land	31,531,452	344,090
% Timberland	57%	67%
% Reserved	2%	0%

Economic Contribution of the Forest Sector¹ Direct Impact²

	Employment (jobs) ³	Labor Income (million \$) ⁴	Value Added (million \$) ⁵	Industry Output (million \$) ⁶
Forestry	2	0.14	0.16	0.21
Logging	18	0.47	0.60	1.35
Primary Solid Wood Products	-	-	-	-
Secondary Solid Wood Products	157	12.27	19.83	47.21
Primary paper & paperboard products	-	-	-	-
Secondary paper & paperboard products	174	13.67	18.43	88.10
Total	351	27	39	137

Total Impact⁷

	Employment (jobs) ³	Labor Income (million \$) ⁴	Value Added (million \$) ⁵	Industry Output (million \$) ⁶
Forestry	2	0.14	0.18	0.24
Logging	20	0.55	0.76	1.64
Primary Solid Wood Products	-	-	-	-
Secondary Solid Wood Products	216	14.88	24.31	56.72
Primary paper & paperboard products	-	-	-	-
Secondary paper & paperboard products	251	17.42	24.67	101.31
Total	489	33	50	160



Timber Growth vs. Harvest Volumes¹⁰

Volume Estimate	NC	Granville
	(Million Green Tons)	
Growth	58.1	1.07
Harvest	32.4	0.24
Growth: Harvest Ratio	1.79	4.46

A map showing local forest product mills nearby the county.

Data Source:

NC Forest Service: Buyers of Timber in North Carolina from the North Carolina Forest Service.

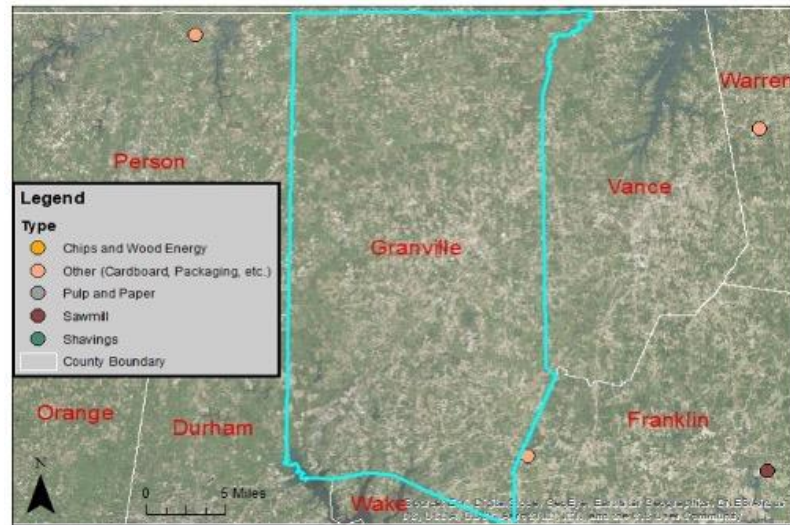
Found at:

http://www.ncforestservice.gov/Managing_your_forest/timber_buyers.htm

NC Counties Shapefile: NC Dept of Transportation.

Found at:

<http://www.nconemap.gov/>



Footnotes:

¹Economic contribution numbers, based on multi-industry contribution analysis, are reported in 2022 dollars. IMPLAN's built-in industry contribution analysis method is used. Sectors included: 15, 16, 19 (partial), 132, 134, 134, 135, 136, 137, 138, 139, 140, 142, 143, 144, 145, 146, 147, 148, 149, 150, 151, 365, 366, 367, 370, 371, and 373. 2022 IMPLAN data are obtained from IMPLAN (<https://implan.com/>). ^[1]

²Direct effect is a series of production changes or expenditures made by producers/consumers as a result of an activity. ^[2]

³Employment includes both full- and part-time jobs. ^[3]

⁴Labor income includes all forms of employment income, including employee compensation (wages and benefits) and proprietor income. ^[4]

⁵Value added is the difference between industry output and the cost of intermediate inputs. It consists of compensation of employees, taxes on production and imports less subsidies, and gross operating surplus. ^[5]

⁶Industry output is the total annual value of production by an industry. ^[6]

⁷Total effect is the sum of direct, indirect, and induced contribution effects generated by the sector. ^[7]

⁸Timberlands are a subset of forestlands that are not reserved by law and potentially available for commercial timber harvest. Federal, state and local governments own public timberlands. Non-industrial private landowners (i.e., farm forests, family forests), forest industry, or other corporate businesses (i.e., timber investment management organizations) own private timberlands. 2022 Data are retrieved from USDA Forest Service Forest Inventory and Analysis (<https://apps.fs.usda.gov/Evalidator/evaluator.jsp>). ^[8]

⁹Reserved forests, as used here, are for public lands where the law does not permit commercial timber production. ^[9]

¹⁰Harvests include removals during timber harvests and removals for other reasons such as land conversion. ^[10]

Contacts for Forest Resources in the County:

N.C. Cooperative Extension

Granville County Center

125 Oxford Outer Loop

Oxford, NC 27565

Phone: (919) 603-1350

Fax: (919) 603-0268

Website: <http://granville.ces.ncsu.edu/>

NC Forest Service

Granville County Ranger Station

911 Hillsboro Street

Oxford, NC 27565

Phone: (919) 693-3154

Email: granville.ncfs@ncagr.gov

Website: <http://www.ncforestservice.gov/contacts/Granville.htm>

Prepared by:

Shila Pokhrel, Graduate Research Assistant

Rajan Parajuli, Ph.D., Associate Professor

Robert Bardon, Ph.D., Professor and Extension Specialist

Extension Forestry

College of Natural Resources

<https://forestry.ces.ncsu.edu/>

NC STATE EXTENSION

This work is supported by Renewable Resources Extension Act Funding from the USDA National Institute of Food and Agriculture.

North Carolina State University and North Carolina A&T State University commit themselves to positive action to secure equal opportunity regardless of race, color, creed, national origin, religion, sex, age, veteran status or disability. In addition, the two Universities welcome all persons without regard to sexual orientation.