



2020 Forestry Contributions

Jackson County, NC

Timberland⁸ & Reserved Forestland⁹ by Ownership

Ownership	NC (Acres)	Jackson (Acres)
Public Timberland	2,565,308	50,064
Private Timberland	15,482,714	214,730
Reserved Forestland	636,455	10,134
Total Timberland & Forestland	18,684,477	274,928
All Land	31,531,452	316,638
% Timberland	57%	84%
% Reserved	2%	3%



Jackson County has about 214,730 acres of privately owned timberland.



Landowners in this county received an estimated stumpage harvest value of \$1.4 million.



The forest sector in this county had a total economic contribution of approximately \$40 million in industry output to the county's economy.

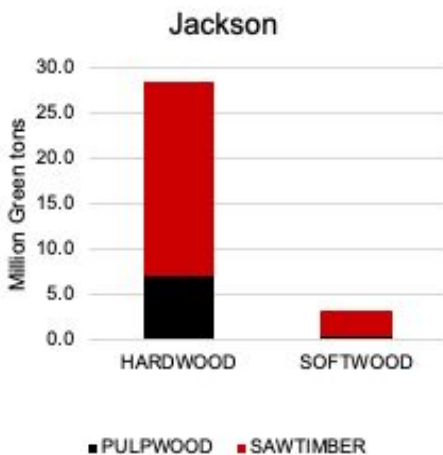


The forest sector in this county supported 169 total jobs with a payroll of about \$8 million.

Economic Contribution¹ of the Forest Sector

	Employment ² (jobs)	Labor Income ³ (million \$)	Value Added ⁴ (million \$)	Industry Output ⁵ (million \$)
Direct Impact⁶				
Forestry	5	0.28	0.33	0.42
Logging	13	0.32	0.33	0.72
Primary solid wood products	40	2.08	2.63	10.60
Secondary solid wood products	12	0.57	0.67	1.84
Primary paper & paperboard products	-	-	-	-
Secondary paper & paperboard products	39	2.88	3.86	19.17
Total	108	6	8	33

Timber Inventory



Timber Growth vs. Harvest¹⁰ Volumes

Volume Estimate	NC	Jackson
Million Green tons		
Growth	57.30	0.41
Harvest	31.80	0.03
Growth:Harvest Ratio	1.80	14.06

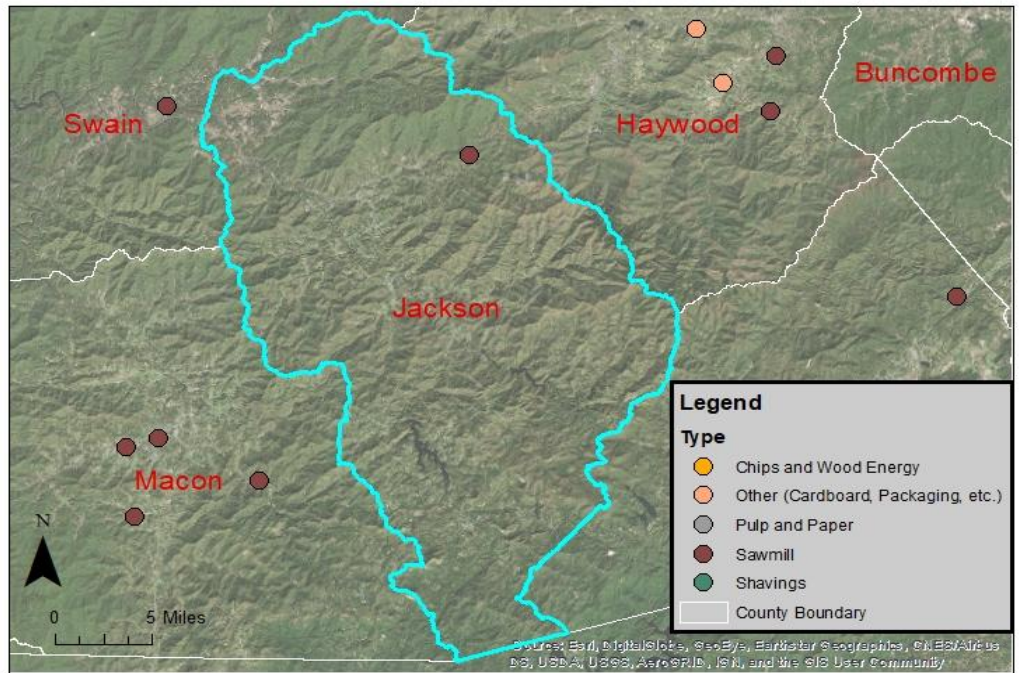
	Employment ² (jobs)	Labor Income ³ (million \$)	Value Added ⁴ (million \$)	Industry Output ⁵ (million \$)
Total Impact⁷				
Forestry	6	0.31	0.38	0.52
Logging	15	0.41	0.46	0.94
Primary solid wood products	66	2.99	3.98	13.46
Secondary solid wood products	15	0.70	0.91	2.36
Primary paper & paperboard products	-	-	-	-
Secondary paper & paperboard products	66	3.97	5.68	23.10
Total	169	8	11	40

A map showing local forest product mills nearby the county

Data Source:

NC Forest Service: Buyers of Timber in North Carolina from the North Carolina Forest Service. Found at: http://www.ncforestservice.gov/Managing_your_forest/timber_buyers.htm

NC Counties Shapefile: NC Dept of Transportation. Found at <http://www.nconemap.com/>



Footnotes:

¹Economic contribution numbers, based on multi-industry contribution analysis, are reported in 2020 dollars. IMPLAN's built-in industry contribution analysis method is used. Sectors included: 15, 16, 19 (partial), 132, 134, 134, 135, 136, 137, 138, 139, 140, 142, 143, 144, 145, 146, 147, 148, 149, 150, 151, 365, 366, 367, 370, 371, and 373. 2019 IMPLAN data are obtained from IMPLAN (<https://implan.com/>).

²Employment includes both full- and part-time jobs.

³Labor income includes all forms of employment income, including employee compensation (wages and benefits) and proprietor income.

⁴Value added is the difference between industry output and the cost of intermediate inputs. It consists of compensation of employees, taxes on production and imports less subsidies, and gross operating surplus.

⁵Industry output is the total annual value of production by an industry.

⁶Direct contribution is a series of production changes or expenditures made by producers/consumers as a result of an activity.

⁷Total contribution is the sum of direct, indirect, and induced contribution effects generated by the sector.

⁸Timberlands are a subset of forestlands that are not reserved by law and potentially available for commercial timber harvest. Federal, state and local governments own public timberlands. Non-industrial private landowners (i.e., farm forests, family forests), forest industry, or other corporate businesses (i.e., timber investment management organizations) own private timberlands. 2020 Data are retrieved from USDA Forest Service Forest Inventory and Analysis (<https://apps.fs.usda.gov/Evalidator/evalidator.jsp>).

⁹Reserved forests, as used here, are for public lands where the law does not permit commercial timber production.

¹⁰Harvests include removals during timber harvests and removals for other reasons such as land conversion.

Contacts for Forest Resources in the County

**NC Cooperative Extension
Jackson County Center**

876 Skyland Drive
Sylva, NC 28779
Phone: (828) 586-4009
Fax: (828) 586-5509
Website: <http://jackson.ces.ncsu.edu/>

**NC Forest Service
Jackson County Ranger Station**

131 Glenn Cabe Road
Sylva, NC 28779
Phone: (828) 631-9316
Fax: (828) 631-9368
Email: jackson.ncfs@ncagr.gov
Website: <http://www.ncforestservice.gov/contacts/Jackson.htm>

Prepared by:

Stephanie Chizmar, Ph.D., Postdoctoral Researcher
Suzanne Teague, Undergraduate Researcher
Rajan Parajuli, Ph.D., Extension Specialist
Robert Bardon, Ph.D., Extension Specialist

Extension Forestry
College of Natural Resources

<https://forestry.ces.ncsu.edu/>

NC STATE EXTENSION

This work is supported by Renewable Resources Extension Act Funding from the USDA National Institute of Food and Agriculture.

North Carolina State University and North Carolina A&T State University commit themselves to positive action to secure equal opportunity regardless of race, color, creed, national origin, religion, sex, age, veteran status or disability. In addition, the two Universities welcome all persons without regard to sexual orientation.