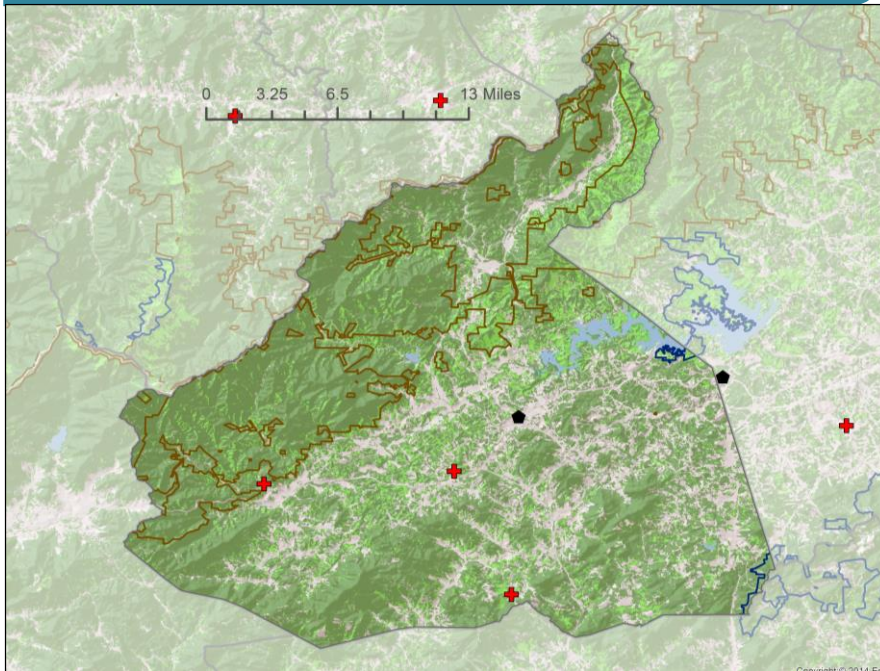


# FORESTRY IMPACTS

## McDowell County, NC



### Map Legend

- ◆ Chip Mills (pulpwood)
- OSB / MDF (pulpwood)
- Pellets (pulpwood / residue)
- Pulp and Paper (pulpwood)
- ✚ Sawmill (sawlogs)
- Hardwoods (Includes Woody Wetlands)
- Softwoods
- Boundaries
  - Federal
  - State
  - Tribal

## 2014 Forest Industry Economic Impact

### Income From Timber Sales<sup>1</sup> :

Income Source	NC	McDowell County
Forest stumpage (\$mill.)	\$422.4	\$3.1
Delivered forest products (\$mill.)	\$841.4	\$6.3

### Forest Industry Economic Impact<sup>2</sup>

Total Impact	NC	McDowell County
Output (\$mill.)	\$30,700	\$412.1
Labor income (\$mill.)	\$7,400	\$69.6
Employment	147,700	1,969

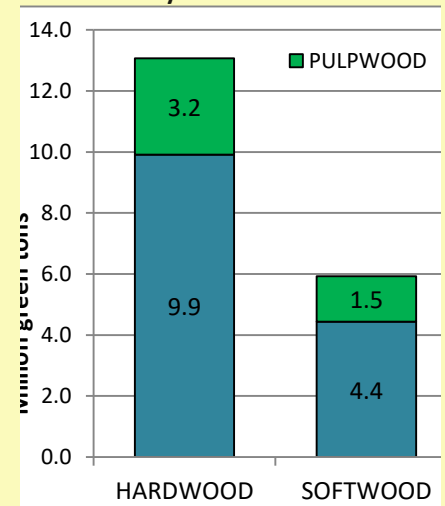
# NC STATE UNIVERSITY

## State and County Timber Data<sup>3</sup>

### Timberland<sup>4</sup> and Reserved Forestland<sup>5</sup> by Ownership

Ownership	NC	McDowell County
	Acres	
Public Timberland	2,678,104	23,659
Private Timberland	15,443,362	185,822
Reserved Forestland	380,130	0
<b>Total</b>	<b>18,501,596</b>	<b>209,481</b>
<b>All Land</b>	<b>31,531,452</b>	<b>284,974</b>
%Timberland	59%	74%
%Reserved	2%	0%

### Timber Inventory



### Timber Growth Vs Harvests<sup>6</sup>

Volume Estimate	NC	McDowell County
	Million green tons	
Growth	54.9	0.87
Harvest	33.1	0.18
Growth:Harvest ratio	1.7	4.80

- This region is producing 380% more volume in timber than harvesting

**Footnotes:**

- <sup>1</sup> Stumpage value is what the landowner receives for the sale of their standing timber. Delivered value is what is paid by the forest products industry upon delivery of the trees to the mill.
- <sup>2</sup> Forest economic impact is based on total effects of all forest products and wood-based industry sectors
- <sup>3</sup> Timber data is from 2012.
- <sup>4</sup> Timberlands are a subset of forestlands that are not reserved by law and potentially available for commercial timber harvest. Federal, state and local governments own public timberlands. Non-industrial private landowners (i.e., farm forests, family forests), forest industry, or other corporate businesses (i.e., timber investment management organizations) own private timberlands.
- <sup>5</sup> Reserved forests, as used here, are for public lands where law does not permit commercial timber production.
- <sup>6</sup> Harvests include removals during timber harvests and removals for other reasons such as land conversion.

**Data provided by:**

- NC Forest Service: Buyers of Timber in North Carolina from the North Carolina Forest Service. Found at: [http://www.ncforestsERVICE.gov/Managing\\_your\\_forest/timber\\_buyers.htm](http://www.ncforestsERVICE.gov/Managing_your_forest/timber_buyers.htm)
- National Land Cover Data Base from the Multi-Resolution Land Characteristics Consortium. Found at: <http://www.mrlc.gov/>
- IMPLAN by Minnesota IMPLAN Group, Inc. Found at: <https://implan.com/>
- Protected Areas Database of the United States from the Conservation Biology Institute. Found at: <http://consbio.org/products/projects/pad-us-cbi-edition>
- Timber Mart South. Found at: <http://www.timbermart-south.com/>
- USDA Forest Service Forest Inventory and Analysis. Found at: <http://apps.fs.fed.us/Evaliator/evaluator.jsp>
- USDA Forest Service Forest Inventory and Analysis Timber Products Output. Found at: [http://srsfia2.fs.fed.us/php/tpo\\_2009/tpo\\_rpa\\_int1.php](http://srsfia2.fs.fed.us/php/tpo_2009/tpo_rpa_int1.php)

## Key Contacts for Forest Resources in McDowell County

**NC Cooperative Extension  
McDowell County Center**

60 E Court St  
Marion, NC 28752  
Phone: (828) 652-7874  
Fax: (828) 652-8104  
Website: <http://mcdowell.ces.ncsu.edu/>

**NC Forest Service  
McDowell County Ranger Station**

151 Ag Services Drive  
Marion, NC 28752  
Phone: 828-652-2636  
Email: [mcdowell.dfr@ncdenr.gov](mailto:mcdowell.dfr@ncdenr.gov)  
Website: <http://www.ncforestsERVICE.gov/>

Prepared by:

Laurel Kays, Graduate Research Assistant  
Robert Bardon, Ph.D., Professor and Associate Dean of Extension  
Dennis Hazel, Ph.D., Associate Professor

Extension Forestry  
College of Natural Resources

Visit us at:

<https://forestry.ces.ncsu.edu/>  
[facebook.com/ncsu.extfor](https://facebook.com/ncsu.extfor)  
<https://twitter.com/NCSUExtForestry>

**NC STATE EXTENSION**

North Carolina State University and North Carolina A&T State University commit themselves to positive action to secure equal opportunity regardless of race, color, creed, national origin, religion, sex, age, veteran status or disability. In addition, the two Universities welcome all persons without regard to sexual orientation.