



# 2020 Forestry Contributions

## Rutherford County, NC

### Timberland<sup>8</sup> & Reserved Forestland<sup>9</sup> by Ownership

Ownership	NC (Acres)	Rutherford (Acres)
Public Timberland	2,565,308	17,357
Private Timberland	15,482,714	187,504
Reserved Forestland	636,455	0
<b>Total Timberland &amp; Forestland</b>	<b>18,684,477</b>	<b>204,861</b>
<b>All Land</b>	<b>31,531,452</b>	<b>362,956</b>
% Timberland	57%	56%
% Reserved	2%	0%



Rutherford County has about 187,504 acres of privately owned timberland.



Landowners in this county received an estimated stumpage harvest value of \$2.6 million.



The forest sector in this county had a total economic contribution of approximately \$265 million in industry output to the county's economy.

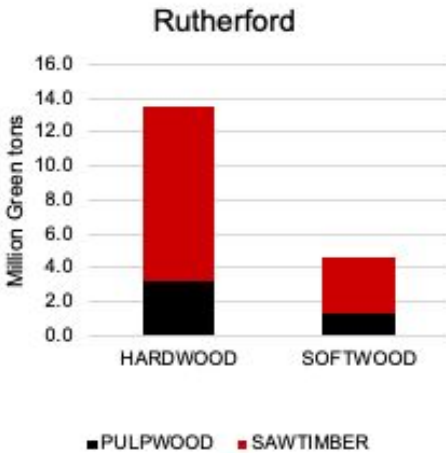


The forest sector in this county supported 1,336 total jobs with a payroll of about \$56 million.

### Economic Contribution<sup>1</sup> of the Forest Sector

	Employment <sup>2</sup> (jobs)	Labor Income <sup>3</sup> (million \$)	Value Added <sup>4</sup> (million \$)	Industry Output <sup>5</sup> (million \$)
<b>Direct Impact<sup>6</sup></b>				
Forestry	3	0.14	0.16	0.20
Logging	96	1.70	1.72	4.73
Primary solid wood products	258	15.42	19.75	70.93
Secondary solid wood products	281	10.57	15.16	47.87
Primary paper & paperboard products	-	-	-	-
Secondary paper & paperboard products	125	8.08	15.08	71.96
<b>Total</b>	<b>763</b>	<b>36</b>	<b>52</b>	<b>196</b>

### Timber Inventory



### Timber Growth vs. Harvest<sup>10</sup> Volumes

Volume Estimate	NC	Rutherford
Million Green tons		
Growth	57.30	0.61
Harvest	31.80	0.74
<b>Growth:Harvest Ratio</b>	<b>1.80</b>	<b>0.82</b>

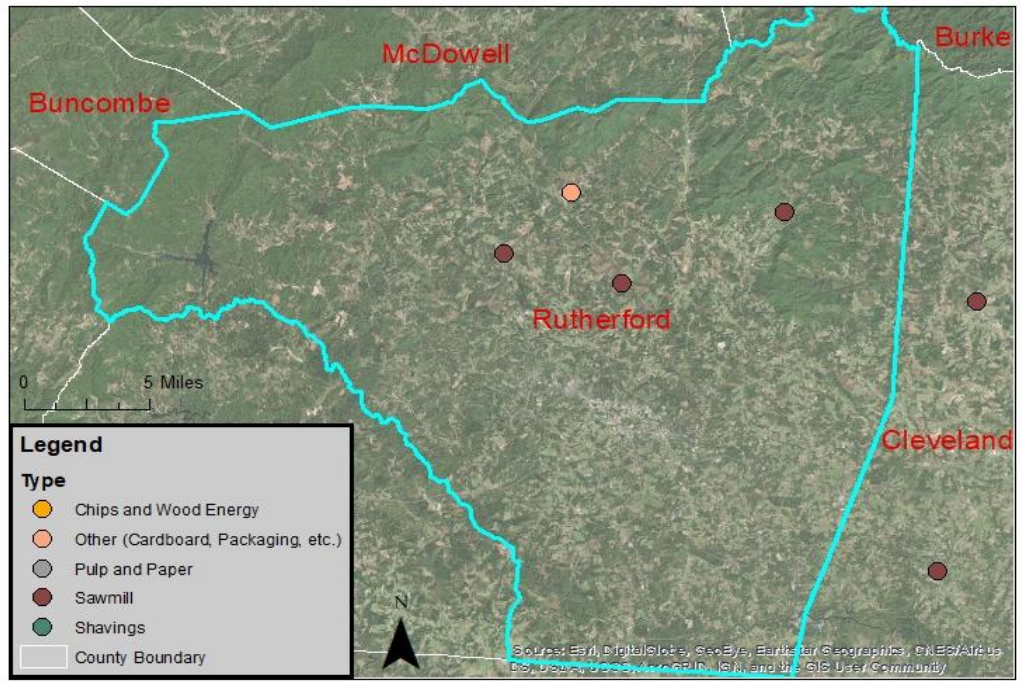
	Employment <sup>2</sup> (jobs)	Labor Income <sup>3</sup> (million \$)	Value Added <sup>4</sup> (million \$)	Industry Output <sup>5</sup> (million \$)
<b>Total Impact<sup>7</sup></b>				
Forestry	4	0.16	0.19	0.26
Logging	147	2.90	3.28	7.30
Primary solid wood products	544	24.61	34.42	103.59
Secondary solid wood products	402	15.20	22.79	64.95
Primary paper & paperboard products	-	-	-	-
Secondary paper & paperboard products	239	12.74	22.86	88.67
<b>Total</b>	<b>1,336</b>	<b>56</b>	<b>84</b>	<b>265</b>

A map showing local forest product mills nearby the county

**Data Source:**

NC Forest Service: Buyers of Timber in North Carolina from the North Carolina Forest Service. Found at: [http://www.ncforestservice.gov/Managing\\_your\\_forest/timber\\_buyers.htm](http://www.ncforestservice.gov/Managing_your_forest/timber_buyers.htm)

NC Counties Shapefile: NC Dept of Transportation. Found at <http://www.nconemap.com/>



**Footnotes:**

<sup>1</sup>Economic contribution numbers, based on multi-industry contribution analysis, are reported in 2020 dollars. IMPLAN's built-in industry contribution analysis method is used. Sectors included: 15, 16, 19 (partial), 132, 134, 134, 135, 136, 137, 138, 139, 140, 142, 143, 144, 145, 146, 147, 148, 149, 150, 151, 365, 366, 367, 370, 371, and 373. 2019 IMPLAN data are obtained from IMPLAN (<https://implan.com/>).

<sup>2</sup>Employment includes both full- and part-time jobs.

<sup>3</sup>Labor income includes all forms of employment income, including employee compensation (wages and benefits) and proprietor income.

<sup>4</sup>Value added is the difference between industry output and the cost of intermediate inputs. It consists of compensation of employees, taxes on production and imports less subsidies, and gross operating surplus.

<sup>5</sup>Industry output is the total annual value of production by an industry.

<sup>6</sup>Direct contribution is a series of production changes or expenditures made by producers/consumers as a result of an activity.

<sup>7</sup>Total contribution is the sum of direct, indirect, and induced contribution effects generated by the sector.

<sup>8</sup>Timberlands are a subset of forestlands that are not reserved by law and potentially available for commercial timber harvest. Federal, state and local governments own public timberlands. Non-industrial private landowners (i.e., farm forests, family forests), forest industry, or other corporate businesses (i.e., timber investment management organizations) own private timberlands. 2020 Data are retrieved from USDA Forest Service Forest Inventory and Analysis (<https://apps.fs.usda.gov/Evaluator/evaluator.jsp>).

<sup>9</sup>Reserved forests, as used here, are for public lands where the law does not permit commercial timber production.

<sup>10</sup>Harvests include removals during timber harvests and removals for other reasons such as land conversion.

**Contacts for Forest Resources in the County**

**NC Cooperative Extension  
Rutherford County Center**

193 Callahan-Koon Road  
Spindale, NC 28160  
Phone: (828) 287-6010  
Fax: (828) 288-4036  
Website: <http://rutherford.ces.ncsu.edu/>

**NC Forest Service  
Rutherford County Ranger Station**

519 Airport Road  
Rutherfordton, NC 28139  
Phone: (828) 286-9201  
Fax: (828) 286-9201  
Email: [rutherford.ncfs@ncagr.gov](mailto:rutherford.ncfs@ncagr.gov)  
Website: <http://www.ncforestservice.gov/contacts/Rutherford.htm>

**Prepared by:**

Stephanie Chizmar, Ph.D., Postdoctoral Researcher  
Suzanne Teague, Undergraduate Researcher  
Rajan Parajuli, Ph.D., Extension Specialist  
Robert Bardon, Ph.D., Extension Specialist

Extension Forestry  
College of Natural Resources

<https://forestry.ces.ncsu.edu/>

**NC STATE** EXTENSION

*This work is supported by Renewable Resources Extension Act Funding from the USDA National Institute of Food and Agriculture.*

North Carolina State University and North Carolina A&T State University commit themselves to positive action to secure equal opportunity regardless of race, color, creed, national origin, religion, sex, age, veteran status or disability. In addition, the two Universities welcome all persons without regard to sexual orientation.