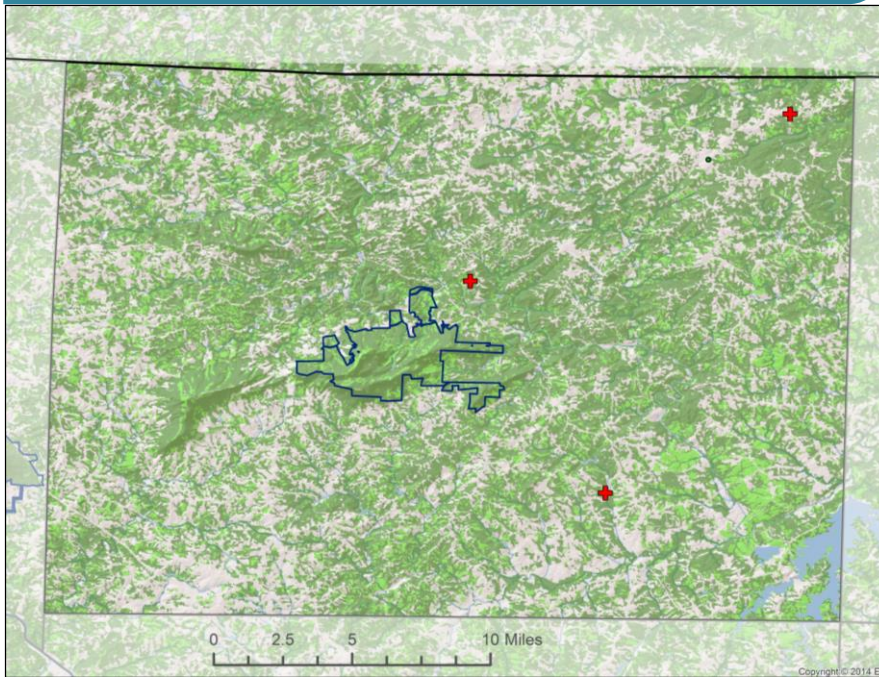


FORESTRY IMPACTS

Stokes County, NC



Map Legend

- Chip Mills (pulpwood)
- OSB / MDF (pulpwood)
- Pellets (pulpwood / residue)
- Pulp and Paper (pulpwood)
- Sawmill (sawlogs)
- Hardwoods (Includes Woody Wetlands)
- Softwoods
- Boundaries
 - Federal
 - State
 - Tribal

2014 Forest Industry Economic Impact

Income From Timber Sales¹ :

Income Source	NC	Stokes County
Forest stumpage (\$mill.)	\$422.4	\$3.9
Delivered forest products (\$mill.)	\$841.4	\$8.0

Forest Industry Economic Impact²

Total Impact	NC	Stokes County
Output (\$mill.)	\$30,700	\$36.6
Labor income (\$mill.)	\$7,400	\$7.1
Employment	147,700	191

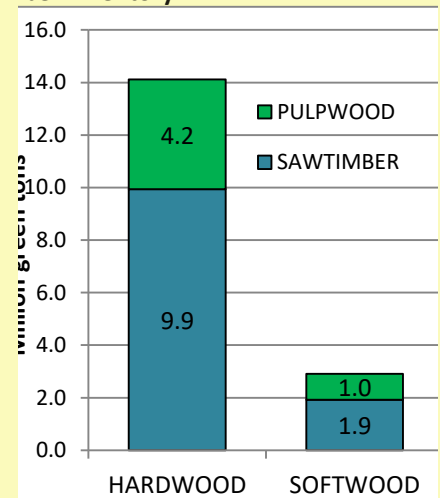
NC STATE UNIVERSITY

State and County Timber Data³

Timberland⁴ and Reserved Forestland⁵ by Ownership

Ownership	NC	Stokes County
	Acres	
Public Timberland	2,678,104	5,480
Private Timberland	15,443,362	203,307
Reserved Forestland	380,130	0
Total	18,501,596	208,787
All Land	31,531,452	291,760
%Timberland	59%	72%
%Reserved	2%	0%

Timber Inventory



Timber Growth Vs Harvests⁶

Volume Estimate	NC	Stokes County
	Million green tons	
Growth	54.9	0.54
Harvest	33.1	0.51
Growth:Harvest ratio	1.7	1.07

- This region is producing 7% more volume in timber than harvesting

Footnotes:

- ¹ Stumpage value is what the landowner receives for the sale of their standing timber. Delivered value is what is paid by the forest products industry upon delivery of the trees to the mill.
- ² Forest economic impact is based on total effects of all forest products and wood-based industry sectors
- ³ Timber data is from 2012.
- ⁴ Timberlands are a subset of forestlands that are not reserved by law and potentially available for commercial timber harvest. Federal, state and local governments own public timberlands. Non-industrial private landowners (i.e., farm forests, family forests), forest industry, or other corporate businesses (i.e., timber investment management organizations) own private timberlands.
- ⁵ Reserved forests, as used here, are for public lands where law does not permit commercial timber production.
- ⁶ Harvests include removals during timber harvests and removals for other reasons such as land conversion.

Data provided by:

- NC Forest Service: Buyers of Timber in North Carolina from the North Carolina Forest Service. Found at: http://www.ncforestservice.gov/Managing_your_forest/timber_buyers.htm
- National Land Cover Data Base from the Multi-Resolution Land Characteristics Consortium. Found at: <http://www.mrlc.gov/>
- IMPLAN by Minnesota IMPLAN Group, Inc. Found at: <https://implan.com/>
- Protected Areas Database of the United States from the Conservation Biology Institute. Found at: <http://consbio.org/products/projects/pad-us-cbi-edition>
- Timber Mart South. Found at: <http://www.timbermart-south.com/>
- USDA Forest Service Forest Inventory and Analysis. Found at: <http://apps.fs.fed.us/Evaluator/evaluator.jsp>
- USDA Forest Service Forest Inventory and Analysis Timber Products Output. Found at: http://srsfia2.fs.fed.us/php/tpo_2009/tpo_rpa_int1.php

Key Contacts for Forest Resources in Stokes County

NC Cooperative Extension Stokes County Center

700 N Main Street
Danbury, NC 27016-0460
Phone: (336) 593-8179
Fax: (336) 593-8790
Website: <http://stokes.ces.ncsu.edu/>

NC Forest Service Stokes County Ranger Station

P.O. Box 72
Danbury, NC 27016
Phone: 336-593-8154
Fax: 336-593-8271
Email: stokes.ncfs@ncagr.gov
Website: <http://www.ncforestservice.gov/>

Prepared by:

Laurel Kays, Graduate Research Assistant
Robert Bardon, Ph.D., Professor and Associate Dean of Extension
Dennis Hazel, Ph.D., Associate Professor

Extension Forestry
College of Natural Resources

Visit us at:

<https://forestry.ces.ncsu.edu/>
facebook.com/ncsu.extfor
<https://twitter.com/NCSUExtForestry>

NC STATE EXTENSION

North Carolina State University and North Carolina A&T State University commit themselves to positive action to secure equal opportunity regardless of race, color, creed, national origin, religion, sex, age, veteran status or disability. In addition, the two Universities welcome all persons without regard to sexual orientation.