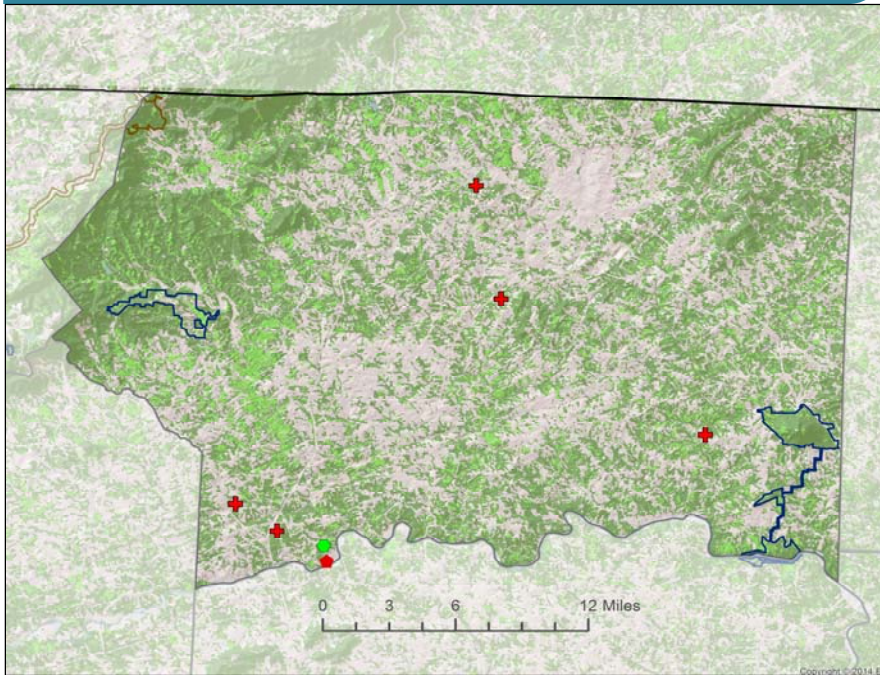


# FORESTRY IMPACTS

## Surry County, NC



### Map Legend

- Chip Mills (pulpwood)
- OSB / MDF (pulpwood)
- Pellets (pulpwood / residue)
- Pulp and Paper (pulpwood)
- Sawmill (sawlogs)
- Hardwoods (Includes Woody Wetlands)
- Softwoods
- Boundaries
  - Federal
  - State
  - Tribal

## 2012 Forest Industry Economic Impact

### Income From Timber Sales<sup>1</sup> :

Income Source	NC	Surry County
Forest stumpage (\$mill.)	\$ 391.5	\$ 2.5
Delivered forest products (\$mill.)	\$ 774.9	\$ 5.8

### Forest Industry Economic Impact<sup>2</sup>

Total Impact	NC	Surry County
Output (\$mill.)	\$21,700	\$108.3
Labor income (\$mill.)	\$5,525	\$31.6
Employment	103,000	738

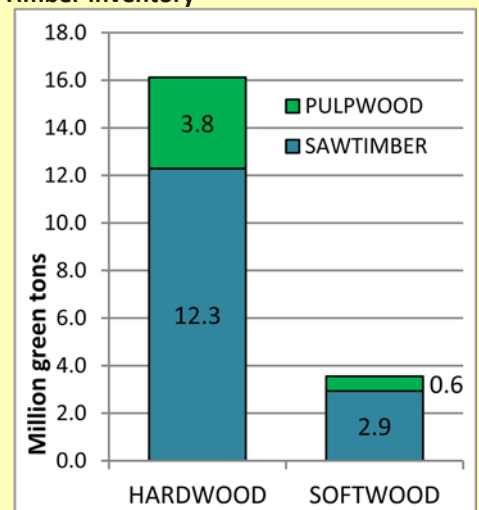
# NC STATE UNIVERSITY

## 2012 State and County Data

### Timberland<sup>3</sup> and Reserved Forestland<sup>4</sup> by Ownership

Ownership	NC	Surry County
	Acres	
Public Timberland	2,678,104	8,298
Private Timberland	15,443,362	194,487
Reserved Forestland	380,130	0
<b>Total</b>	<b>18,501,596</b>	<b>202,785</b>
All Land	31,531,452	344,153
%Timberland	59%	59%
%Reserved	2%	0%

### Timber Inventory



### Timber Growth Vs Harvests<sup>5</sup>

Volume Estimate	NC	Piedmont Region
	Million green tons	
Growth	49.2	15.2
Harvest	33.7	10.7
Growth:Harvest ratio	1.46	1.42

*This region is producing 42% more volume in timber than harvesting*



**Footnotes:**

- <sup>1</sup> Stumpage value is what the landowner receives for the sale of their standing timber. Delivered value is what is paid by the forest products industry upon delivery of the trees to the mill.
- <sup>2</sup> Forest economic impact is based on total effects of all forest products and wood-based industry sectors
- <sup>3</sup> Timberlands are a subset of forestlands that are not reserved by law and potentially available for commercial timber harvest. Federal, state and local governments own public timberlands. Non-industrial private landowners (i.e., farm forests, family forests), forest industry, or other corporate businesses (i.e., timber investment management organizations) own private timberlands.
- <sup>4</sup> Reserved forests, as used here, are for public lands where law does not permit commercial timber production.
- <sup>5</sup> Harvests include removals during timber harvests and removals for other reasons such as land conversion.

**Data provided by:**

- NC Forest Service: Buyers of Timber in North Carolina from the North Carolina Forest Service. Found at: [http://www.ncforestservice.gov/Managing\\_your\\_forest/timber\\_buyers.htm](http://www.ncforestservice.gov/Managing_your_forest/timber_buyers.htm)
- National Land Cover Data Base from the Multi-Resolution Land Characteristics Consortium. Found at: <http://www.mrlc.gov/>
- IMPLAN by Minnesota IMPLAN Group, Inc. Found at: <https://implan.com/>
- Protected Areas Database of the United States from the Conservation Biology Institute. Found at: <http://consbio.org/products/projects/pad-us-cbi-edition>
- Timber Mart South. Found at: <http://www.timbermart-south.com/>
- USDA Forest Service Forest Inventory and Analysis. Found at: <http://apps.fs.fed.us/Evalidator/evalidator.jsp>
- USDA Forest Service Forest Inventory and Analysis Timber Products Output. Found at: [http://srsfia2.fs.fed.us/php/tpo\\_2009/tpo\\_rpa\\_int1.php](http://srsfia2.fs.fed.us/php/tpo_2009/tpo_rpa_int1.php)

## Key Contacts for Forest Resources in Surry County

**NC Cooperative Extension**

**Surry County Center**

210 N Main St

Dobson, NC 27017

Phone: (336) 401-8025

Fax: (336) 401-8048

Website: <http://surry.ces.ncsu.edu/>

**NC Forest Service**

**Surry County Ranger Station**

111 Atkins Street

Dobson, NC 27017

Phone: 336-356-8177

Fax: 336-356-8649

Email: [surry.ncfs@ncagr.gov](mailto:surry.ncfs@ncagr.gov)

Website: <http://www.ncforestservice.gov/contacts/surry.htm>

**Prepared by**

James Jeuck, Extension Associate

Robert Bardon, Ph.D., Professor

Dennis Hazel, Ph.D., Associate Professor

Corey Sugerik

**Visit our website!**

<http://www.ces.ncsu.edu/forestry/>

**Follow us on**

Facebook! <https://www.facebook.com/ncsu.extfor>

Twitter! <https://twitter.com/NCSUExtForestry>



Distributed in furtherance of the acts of Congress of May 8 and June 30, 1914. North Carolina State University and North Carolina A&T State University commit themselves to positive action to secure equal opportunity regardless of race, color, creed, national origin, religion, sex, age, veteran status or disability. In addition, the two Universities welcome all persons without regard to sexual orientation. North Carolina State University, North Carolina A&T State University, U.S. Department of Agriculture, and local governments cooperating.