

2018 Forestry Contributions

Watauga County, NC

NC STATE

EXTENSION



- Watauga County has about 118,169 acres of privately owned timberland.
- Landowners in this county received an estimated stumpage harvest value of \$1.5 million.
- The forest sector in this county, including forestry, logging, and forest product industries, had a total economic contribution of approximately \$30.1 million in industry output to the county's economy, supporting about 218 jobs with a payroll of about \$8.2 million.

2018 State and County Data

Timberland⁸ and Reserved Forestland⁹ by Ownership

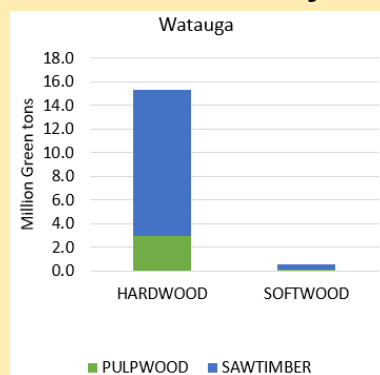
Ownership	NC	Watauga
Acres		
Public Timberland	2,534,982	4,470
Private Timberland	15,538,727	118,169
Total Timberland	18,082,711	122,639
Reserved Forestland	630,629	0
All Land	31,531,452	200,534
%Timberland	57%	61%
%Reserved	2%	0%

2018 Economic Contribution¹ of the Watauga Forest Sector

Sub-industry	Employment ²	Labor Income ³ (million \$)	Value Added ⁴ (million \$)	Industry Output ⁵ (million \$)
Direct Contribution⁶				
Forestry operations	2	0.1	0.11	0.14
Logging	15	1.84	1.87	2.37
Primary solid wood mills	15	0.39	0.64	3.75
Secondary solid wood mills	104	2.58	3.7	14.01
Primary paper mills	-	-	-	-
Secondary paper mills	.	0.01	0.01	0.18
Total	136	4.92	6.34	20.45

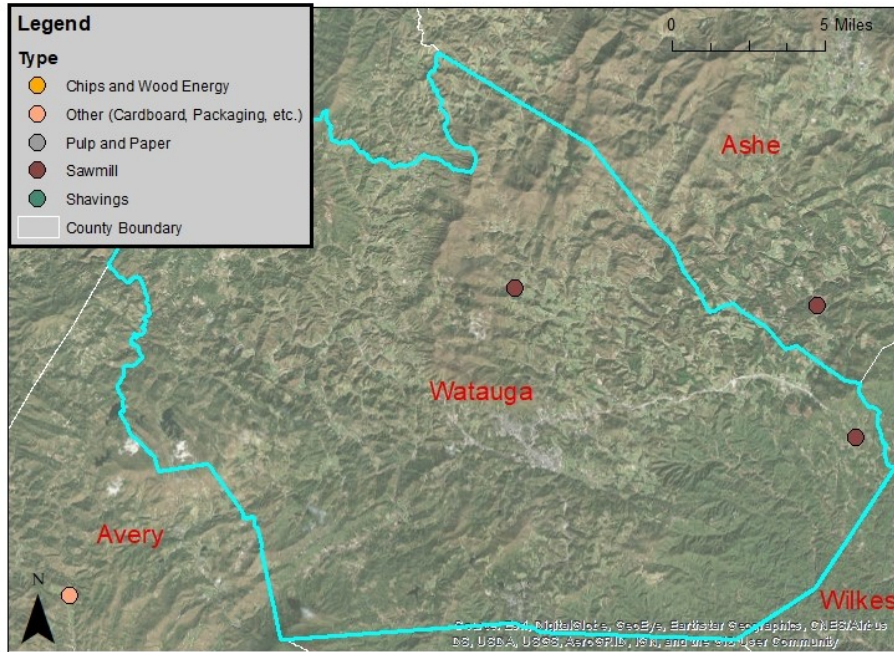
Total Contribution⁷				
Forestry operations	2	0.12	0.14	0.2
Logging	34	2.36	2.73	3.93
Primary solid wood mills	36	1.55	2.15	6.39
Secondary solid wood mills	145	4.12	6.2	19.39
Primary paper mills	-	-	-	-
Secondary paper mills	1	0.02	0.04	0.22
Total	218	8.18	11.26	30.13

Timber Inventory



Timber Growth Vs Harvests¹⁰

Volume Estimate	NC	Watauga
Million Green Tons		
Growth	59.5	0.3
Harvest	35	-
Growth: Harvest Ratio	1.71	-



A map showing local forest product mills nearby the county (Data source: NC Forest Service: Buyers of Timber in North Carolina from the North Carolina Forest Service. Found at: http://www.ncforestservice.gov/Managing_your_forest/timber_buyers.htm and NC Counties Shapefile: NC Dept of Transportation. Found at <http://www.nconemap.com/>)

Footnotes:

¹Economic contribution numbers, based on multi-industry contribution analysis, are reported in 2018 dollars. IMPLAN's built-in industry contribution analysis method is used. IMPLAN sectors included: 15, 16, 19 (partial), 132, 134, 134, 135, 136, 137, 138, 139, 140, 142, 143, 144, 145, 146, 147, 148, 149, 150, 151, 365, 366, 367, 370, 371, and 373. 2018 IMPLAN data are obtained from IMPLAN (<https://implan.com/>).

²Employment includes both full- and part-time jobs.

³Labor income includes all forms of employment income, including employee compensation (wages and benefits) and proprietor income.

⁴Value added is the difference between industry output and the cost of intermediate inputs. It consists of compensation of employees, taxes on production and imports less subsidies, and gross operating surplus.

⁵Industry output is the total annual value of production by an industry.

⁶Direct contribution is a series of production changes or expenditures made by producers/consumers as a result of an activity.

⁷Total contribution is the sum of direct, indirect, and induced contribution effects generated by the sector.

⁸Timberlands are a subset of forestlands that are not reserved by law and potentially available for commercial timber harvest. Federal, state and local governments own public timberlands. Non-industrial private landowners (i.e., farm forests, family forests), forest industry, or other corporate businesses (i.e., timber investment management organizations) own private timberlands. 2019 Data are retrieved from USDA Forest Service Forest Inventory and Analysis (<http://apps.fs.fed.us/Validator/evaluator.jsp>).

⁹Reserved forests, as used here, are for public lands where the law does not permit commercial timber production.

¹⁰Harvests include removals during timber harvests and removals for other reasons such as land conversion.

Contacts for Forest Resources in the County

**NC Cooperative Extension
Watauga County Center**
971 W King St
Boone, NC 28607
Phone: (828) 264-3061
Fax: (828) 264-3067
Website: <http://watauga.ces.ncsu.edu/>

**NC Forest Service
Watauga County Ranger Station**
655 Landfill Road
Boone, NC 28607
Phone: 828-265-5375
Fax: 828-265-1582
Email: Andrew.Harsey@ncagr.gov
Website: <http://www.ncforestservice.gov/contacts/Watauga.htm>

Prepared by:

Rajan Parajuli, Ph.D., Extension Specialist
Stephanie Chizmar, Graduate Student
Morgan Hoy, Graduate Student
Olakunle Sodiya, Graduate Student
Robert Bardon, Ph.D., Extension Specialist

Extension Forestry
College of Natural Resources

Visit us at:

<https://forestry.ces.ncsu.edu/>

NC STATE EXTENSION

This work is supported by Renewable Resources Extension Act Funding from the USDA National Institute of Food and Agriculture.

North Carolina State University and North Carolina A&T State University commit themselves to positive action to secure equal opportunity regardless of race, color, creed, national origin, religion, sex, age, veteran status or disability. In addition, the two Universities welcome all Wataugas without regard to sexual orientation.